

Pocket Scope

8x Telescope and 30x Microscope

Observe things near and far with your GeoSafari® Pocket Scope.

Using the Pocket Scope—Microscope

Tip #1

Holding the Pocket Scope:

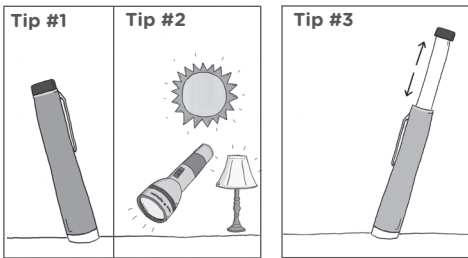
Be sure the rim of the lens casing is flat against the surface you are observing. Slide the eyepiece all the way into the body of the Pocket Scope.

Tip #2

Use a Lot of Light: Make sure plenty of light shines on what you are observing. Be sure it is shining into the lens casing from the front. Sunlight is best, but you can also use a lamp or flashlight.

Tip #3

Focus: Focus the Pocket Scope by sliding the eyepiece away from the lens. Most objects and surfaces become clear when you slide the eyepiece out about 1/4 inch (8mm). That's about the width of the fingernail on your little finger.



Tip #4

Flip the image:

Find a letter e on this page and look at it through your Pocket Scope. What do you notice? Yes, the e is upside down and backward. Now turn the page upside down and look at the e again. What do you notice? Yes, the e is now right-side up. All things will appear upside down and backward when you look at them through your Pocket Scope microscope. So, if you want to look at things right-side up, just turn the object upside down before observing it with your Pocket Scope microscope.

Try This!

Check out the tiny hairs on your arm using the Pocket Scope microscope.

Note: If you wear glasses, it may be easier to use the Pocket Scope by removing your glasses and looking at objects directly through the eyepiece.

Using the Pocket Scope—Telescope

Tip #1

Extend the Scope: Slide the eyepiece out of the body of the Pocket Scope to its longest length.

Tip #2

Focus: Look at a distant object through the eyepiece. Gently slide the casing toward the eyepiece until the object is clear.

Tip #3

Hold Steady: Keep the view steady by resting your arm or hand on a solid surface.

Try This!

Look through a window for a sign, billboard, or house numbers that you can almost, but not quite, see with your naked eye. Use your Pocket Scope telescope to read it. Draw the object and fill in the words (or numbers).

Now that you are trained in using your Pocket Scope, explore the world around you!

Tip #1



Tip #4

Be Respectful: Never spy on people you do not know.

WARNING: Never look directly into the sun or other very bright lights with the Pocket Scope. This could damage your eyesight!

Developed in Southern California by Educational Insights.
© Educational Insights, Gardena, CA (U.S.A.). All rights reserved.
Learning Resources Ltd., Bergen Way, King's Lynn, Norfolk,
PE30 2JG, UK. Please retain this information. Made in China.
educationalinsights.com

Hecho en China. Conservar estos datos.
Fabriqué en Chine. Informations à conserver.
Made in China. Bitte bewahren Sie unsere
Adresse für spätere Nachfragen auf.

ATENCIÓN: PELIGRO DE ASFIXIA.
Piezas pequeñas. No se recomienda para menores de 3 años.
ATTENTION: RISQUE D'ÉTOUFFEMENT.
Petites pièces. Interdit aux enfants en dessous de 3 ans.
ACHTUNG: ERSTICKUNGSGEFAHR.
Kleine Teile. Nicht geeignet für Kinder unter 3 Jahren.



WARNING:
CHOKING HAZARD—Small parts.
Not for children under three (3) years.